



VETS ON WHITE HART LANE

www.vetsonwhl.co.uk

NEWS

AUTUMN 2010



Vets on White Hart Lane
45 White Hart Lane,
Barnes, London
SW13 0PU

- Your independent, neighbourhood practice
- Modern surgical facilities
- “Gold standard” anaesthetic and monitoring systems
- In-house laboratory
- Nurses clinics with qualified nurses
- X-ray with automatic processing
- Ultrasound examination facilities
- Blood pressure measurement
- E.C.G heart assessment
- Certificate holder in veterinary cardiology
- Pet slimmer clubs

Consulting Hours Monday to Friday

9.00-10.00am no appointments required. For other times ring for appointment.

Late night surgery up to 8.00pm on Tuesdays and Thursdays.

Saturday

By appointment 8.30am to 12.00pm.

For appointments ring
020 8878 7287
or **020 8878 0552**.

For emergencies ring
020 8878 6080

Improvements to the Hill's diets we stock



Lots of your animals are fed on Hill's diets, which we always have in stock. You will notice some of the familiar names, like **hair ball control** or **feline light** will be changing.

This is quite exciting (well, as vets and nurses it excites us but maybe we are a bit sad). The new name is the 'vet essentials range'. We want to assure you that the vet essential range has exactly the same benefits that you are used to.

The main difference is that they have simplified the range. All the cat range now have the same levels of insoluble fibre as the old hairball control, the same texture as the old oral care to fight dental disease and the same essential fatty acids to promote healthy skin without having to choose one or other of them. The same diet can be used like the old light diet, for those cats that are predisposed to weight gain. You just follow a different feeding guide on the pack. We hope this should simplify what can be a confusing topic and you can relax and just feed the diet for either a kitten, adult or mature adult.



The dog diets also have a proven benefit for dental health and joint support and coat quality. Again it depends how old your dog is (or what life stage they have reached). You would either uses puppy, adult or mature adult. All the

diets are free of artificial preservatives, colours and flavours.

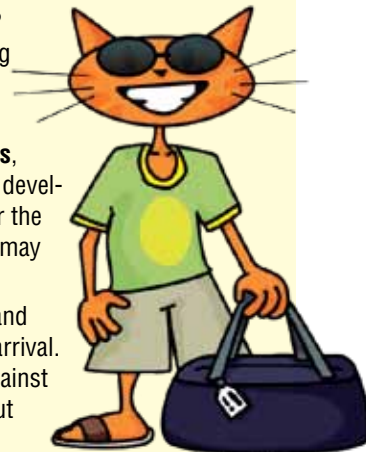
Please do not hesitate to ask Barbara at reception or Marion, Mel, Nikki or Rebecca if you need any help. Otherwise talk to Katy, Simon or Alexia if you are having a consultation and they will also help to answer any questions you have.

Holiday time – taking your pet abroad!

DO YOU fancy taking your pet on holiday with you next summer? With the Pet Travel Scheme in place, many more owners are taking their dogs and cats on holiday and to live in other countries with no need for a stay in quarantine on the way back.

Your pet will need to be **microchipped**, **vaccinated against rabies**, and have a **blood test** done to prove that sufficient immunity has developed. They may then enter the UK a *minimum* of six months after the blood test which confirms rabies immunity. This means that you may need to start planning now for next summer!

Additionally, your pet may re-enter the UK only after certain tick and tapeworm treatments have been carried out and certified before arrival. Other treatments are also advisable to help to protect your pet against exotic diseases whilst abroad. Please ask us for more details – but don't delay if you are planning a trip for next year!



Photos: Jane Burton



For further information on any of the topics covered in this newsletter, please contact your local surgery



Ear disease – an earie tale!

DID you know that ear problems are surprisingly common in pets? However unlike the condition in people, where “earaches” frequently involve the middle and inner ear, most ear problems in pets occur in the outer or *external* ear canals.

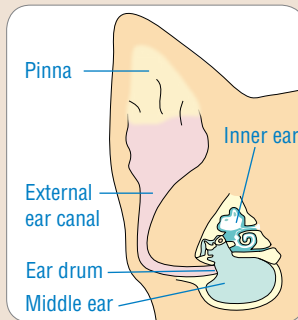
Anatomically, the ear is protected externally by a pinna (or flap). A narrow external ear canal carries sound down to the ear drum, where it passes onto the middle and inner ear.

In the healthy ear – see middle picture, the opening to the external ear canal is lined with smooth pink (or pigmented) skin with no evidence of any redness or discharge.

As mentioned above, most of the ear problems seen in pets occur in the *external* ear canal – a condition called **otitis externa** (sometimes called canker). Signs of otitis externa commonly include ear rubbing, head shaking, and red-dened, irritated skin lining the external ear canal. Additionally there is often a discharge which may be foul smelling.

There are several underlying causes of otitis externa. These include ear mites (*Otodectes cynotis*) – see lower right photo, and trapped foreign bodies such as grass awns. Localised allergies affecting the skin lining the external ear canal are another cause, leading to scratching, which allows opportunistic bacterial and fungal infections to infect the external ear canal.

In common with many conditions, the key to success with otitis externa is *early diagnosis and treatment*. If your pet is showing any of the symptoms described above, please bring him in for a thorough examination since the sooner we can start treatment the better!



The ear in cross section. Most ear problems occur in the external ear canal



Healthy ear in a dog: view of the pinna and opening to the external ear canal.



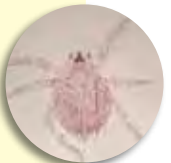
Otitis externa in a cat with ear mites (*Otodectes cynotis*) with a characteristic crusty brown discharge in the external ear canal. Inset: *Otodectes cynotis* (x 30), photographed down a microscope



Grass awn



Tick in situ



Microscopic view of a Harvest mite

Autumn Alarm!

IT'S HARD to believe that the Summer is over and Autumn is upon us again. Although this time of year has a beauty of its own, it also holds many hazards for our pets:

Fleas are an ever present problem, so now is not the time to lower your guard against these little pests!

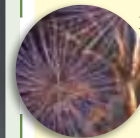
Ticks are another Autumn hazard, living in long grass and woodland areas. Ticks clamber onto pets, firmly attaching themselves and feeding on their blood. Worse still they can also spread a range of diseases including Lyme disease and Babesiosis.

Harvest mites are active in long grass at this time of year, swarming onto passing pets where they tend to congregate on the ears, eyelids, feet and the underside of the abdomen. They are easily identified as bright orange dots adhering tightly to the skin and are usually a cause of great irritation.

Fireworks are another hazard. It is always advisable to keep pets indoors on firework night, and this is especially important for those pets that are phobic about noise. These pets may benefit from medication to reduce anxiety; habituation to loud noises over a long period of time can also be helpful.

As the weather cools down **bees** and **wasps** become dozy and are easily caught by dogs and cats, but can still give your pets a nasty sting!

Keep your pets safe this Autumn! Let us advise you on keeping your pets parasite free, and fit and well during the firework season. Please contact us for further information.



Dog photo (top left): Jane Burton

Arthritis – new life for affected pets



MANY of our pets lead very active lives in their early years and thankfully take normal joint function for granted. However arthritis is a relatively common problem in older pets, and in the majority of cases occurs secondary to a lifetime of wear and tear on the joints. It may also occur as a result of joint trauma, or secondary to a malformation of the joint (for example hip dysplasia).

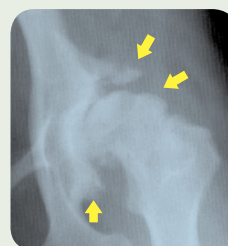
Arthritis is characterised by a breakdown of the joint cartilage and formation of secondary new bone around the joint. On an x-ray the fluffy new bone can often be clearly seen (see lower right x-ray). Arthritic joints are typically stiff, swollen and painful.

The signs of arthritic change are usually fairly obvious – pets show difficulty in getting to their feet after rest, dogs may show problems getting in and out of cars, and possibly a reluctance to go on walks.

The good news is that new forms of **medication**, together with **weight control**, can make a huge difference to the lives of affected pets. If you suspect your pet may have arthritis, come and see us for a check-up today – it really can make a difference!



Normal hip joint



Arthritic hip joint (in a dog with hip dysplasia). Note the fluffy new bone (arrowed) around the joint