



# VETS ON WHITE HART LANE

www.vetsonwhl.co.uk

# NEWS

WINTER 2011/2012

Vets on White Hart Lane  
45 White Hart Lane,  
Barnes, London  
SW13 0PU

- Your independent, neighbourhood practice
- Modern surgical facilities
- “Gold standard” anaesthetic and monitoring systems
- In-house laboratory
- Nurses clinics with qualified nurses
- X-ray with automatic processing
- Ultrasound examination facilities
- Blood pressure measurement
- E.C.G heart assessment
- Certificate holder in veterinary cardiology
- Pet slimmer clubs

## Consulting Hours

### Monday to Friday

9.00-10.00am no appointments required. For other times ring for appointment.

**Late night surgery** up to 8.00pm on Tuesdays and Thursdays.

### Saturday

By appointment 8.30am to 12.00pm.

For appointments ring  
**020 8878 7287**  
or **020 8878 0552**.

For emergencies ring  
**020 8878 6080**

## Changes to Pets Travel Scheme



From January 1<sup>st</sup> 2012 there will be changes to the **Pets Travel scheme**.

Pets travelling from other EU countries and listed countries (eg. USA, Australia and Japan) will no longer require to be blood

tested after they have been vaccinated against rabies.

From these countries, pets will only have to wait 21 days after a rabies vaccination before they can enter the UK as opposed to the 6 months wait they now have.

Pets travelling from unlisted countries will no longer have to undergo 6 months compulsory quarantine. As long as they have been microchipped, vaccinated against rabies, passed a blood test and waited four months after the vaccination, they can be imported into the UK.

This means that anyone planning on travelling with their pet to an EU or listed country after Jan 1<sup>st</sup> 2012, will only need to have them vaccinated against rabies and wait 21 days before they arrive back into the UK.

These changes will not affect any one who already has a pets passport as long as they keep up with their rabies vaccinations.

Pets will no longer have to have been treated against ticks 24-48 hours before arrival into the UK.

As yet there has been no change in the requirement for the treatment against tapeworms so there is still a requirement to see a vet 24-48 hours before arriving back into the UK.

These changes only apply to getting back into the UK so you still need to check up what the entry requirements are for the individual countries you are visiting.

## Practice News

We are pleased to welcome **Lisa Rowle** to our team. She has been with us since August. She has been qualified for 2 years and was head nurse at her previous practice. She looks forward to meeting you and your pets in the near future.



**Katy completed her half marathon** to raise money for TOLFA, the small but wonderful Indian animal charity that the practice supports. We could not believe how generous you all were in your sponsorship. Katy says she wanted to start walking half way around but your support kept her going and she did not stop!

## Vaccination – is your pet up to date?

Did you know that one of the key reasons pets are living longer is that we are able to **vaccinate** them against a range of **infectious diseases** (such as *parvovirus* in dogs and *feline enteritis virus* in cats) that, without vaccination, pose a deadly threat to our pets.

Provided their mother was vaccinated, puppies and kittens have a certain level of immunity that protects them in the first few weeks of life. However this rapidly falls and, in order to restore it, a **primary course of vaccination** is required to boost their natural immunity and ensure their health and survival. However this immunity will also fade over time and **regular booster vaccinations**, combined with a **health check**, are the best way of protecting your pet, plus keeping an eye out for any other problems.

Don't take any risks with your pet's wellbeing – keep them healthy with regular vaccinations and health checks!



Photos: Warren Photographic



# You are what you eat!



We all know the benefits of eating a balanced diet, but did you know that your pet's nutritional requirements actually *change* throughout their lives? The good news is that specially balanced *life-stage* diets are available for every stage of your pet's life, from tiny puppies and kittens, through adulthood and on to old age.

**Puppies and kittens** require a balanced diet with higher (but not excessive) levels of energy, protein for muscle development and essential fatty acids for a healthy shining coat. The correct mineral balance helps bones and joints develop correctly. This is particularly important for large and giant breeds of dog and they have their own specially formulated puppy food.



**Adult pets**, with their major growth phase behind them, require a balanced diet to keep them healthy, but with lower levels of many of the nutrients mentioned above.

**Senior Pets:** As pets become older, their systems become a little less efficient and if they receive too much of a particular nutrient, their bodies will have to work much harder to clear it. Senior foods are specially formulated with this in mind, with lower energy levels to avoid weight gain (as pets become less active), but with altered protein and mineral levels to reduce the workload of internal organs such as the kidneys.

The good news is that feeding your pet a balanced diet, precisely formulated for their particular *life-stage*, plays a very important role in keeping them fit and well. Please ask us for more information and we can help choose the perfect diet for your pet!

## Prescription Diets

In addition to life-stage diets, there are also specially formulated "prescription diets" for pets with specific health problems such as diseases of the kidneys, liver, heart, skin, joints and teeth.

Many of the conditions mentioned above require long term management, and prescription diets can play a very useful role in improving the lives of pets with a variety of conditions.



## Rabbiting on!

Rabbits are very popular as pets, and just as with other pets, need regular vaccinations and health checks to keep them fit and well.

They can be **vaccinated** against two potentially fatal infectious diseases:

- **Myxomatosis** is a viral infection spread by blood sucking insects such as rabbit fleas and mosquitoes. The virus multiplies on the skin leading to blindness and difficulty in eating. Rabbits become very ill and sadly many die from this distressing condition.

- **Viral Haemorrhagic Disease** can be spread *directly* between rabbits or *indirectly*, via contaminated hutches, bedding or food. Symptoms include loss of appetite, nose bleeds, lethargy and sudden death.

Turning to **feeding**, did you know that rabbits have continuously growing teeth? This enables wild rabbits to graze all day on grass and other abrasive foods without wearing out their teeth! Feeding your pet rabbit the correct diet is equally important and should consist mainly of hay and grass, together with a selection of fresh food, and a small amount of good quality commercial rabbit food, with pelleted foods to avoid the problem of selective feeding.

**Shelter:** The winter months can be very challenging for pets that live outside. It is important to ensure that their hutches are warm, dry and clean and have plenty of bedding. Water bottles should be checked regularly to ensure they have not become frozen.

Finally, if you have any questions on caring for your pet rabbit – please ask a member of our practice team!

## Fact File: Ear Disease



Does your pet show signs of head shaking and ear scratching? These are commonly seen in pets and, combined with other symptoms such as ear redness and discharge – point to ear disease as a problem. The ear is protected externally by a pinna (or flap). A narrow ear canal carries sound to the ear drum where it passes onto the middle and inner ear.

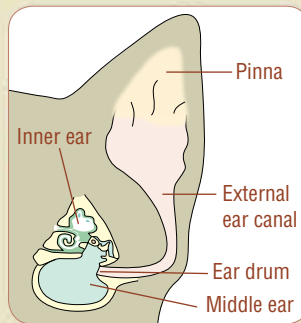
Unlike the situation in humans where middle and inner ear disease is common, most of the problems seen in pets occur in the *external* ear canal – an often very painful condition called otitis externa.

Virtually all otitis externa is triggered by an underlying cause; common underlying causes include: –

- Ear Mite (*Otodectes cynotis*) infestations – commonly seen in puppies and kittens.
- Trapped foreign bodies such as grass awns.
- Localised allergic skin disease affecting the skin lining the external ear canal – often as part of a more generalised skin condition. Inhaled allergies and food allergies will commonly present in this way.

In order to effectively treat ear disease, it is important to determine the *underlying cause* of the problem, however this is often obscured and made worse by *secondary* opportunistic bacterial and fungal infections.

If your pet is showing symptoms of ear disease it is important that we examine them and establish the underlying cause of the problem as soon as we can. This will involve an examination of your pet's ear plus further lab tests in some cases. In common with many conditions, *early diagnosis* and treatment gives us the best chance of curing ear disease in pets.



The ear in cross section. Most ear problems occur in the external ear canal



Otitis externa in a cat with ear mites (*Otodectes cynotis*). The photo shows the characteristic crusty brown discharge in the external ear canal



Electron micrograph of the ear mite – *Otodectes cynotis*

